

MECHANICAL SECRET FIXED LAPPED SYSTEM

- 1. COVER PAGE
- 2. BASE DETAIL @ GRADE
- 2a. BASE DETAIL
- 3. TYPICAL HORIZONTAL JOINT DETAIL
- 4. COPING DETAIL
- 5. TYPICAL VERTICAL JOINT DETAIL
- 6. INTERMEDIATE SUPPORT DETAIL
- 7. OUTSIDE CORNER DETAIL (OPEN CORNER)
- 8. OUTSIDE CORNER DETAIL (SQUARED CORNER)
- 9. OUTSIDE CORNER DETAIL (OPEN CORNER)
- 10. OUTSIDE CORNER DETAIL W / EXTRUSION
- 11. OUTSIDE CORNER DETAIL W / EXTRUSION
- 12. OUTSIDE CORNER DETAIL W / EXTRUSION
- 13. L ELEMENT FIXING DETAIL
- 14. INSIDE CORNER DETAIL
- 15. INSIDE CORNER DETAIL (OPTIONAL)
- 16. WINDOW SILL DETAIL
- 17. WINDOW HEAD DETAIL
- 18. WINDOW JAMB DETAIL
- 19. WINDOW JAMB DETAIL (OPTIONAL)
- 20. RAILS
- 21. GIRT SPACING LAYOUT

SUBSTRATE: VARIES

INSULATION: BY OTHERS (ALL)

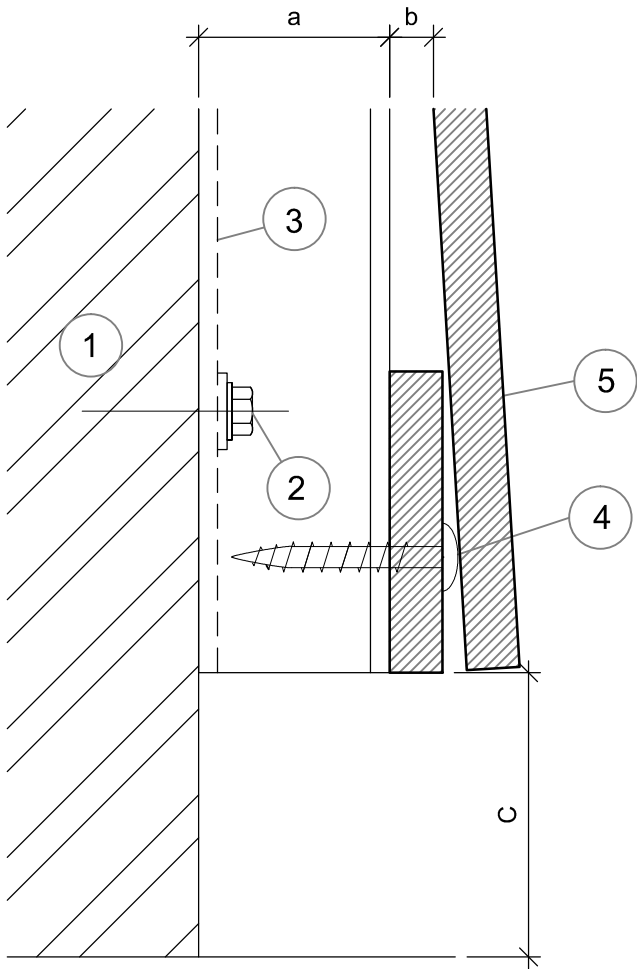
CLADDING: STENI PANEL

DATE: 09-13-2021

GIRT ORIENTATION: VERTICAL

COVER PAGE

NOT TO SCALE



Items	
1	Substrate (By Others)
2	Primary fixing will vary subject to substrate composition
3	Aluminum or Steel sub-framing
4	Stainless steel screw A4 4 X35 mm
5	Steni panel maximum height of 7 3/4" (196mm)

Dimensions	
a	1" Cavity
b	1/4" Panel nominal thickness (6 mm)
c	2" From grade
* Note! dimension may vary due to the shimming requirement for plumbing and alignment of rails	

SUBSTRATE: VARIES

CLADDING: STENI PANEL

INSULATION: BY OTHERS (ALL)

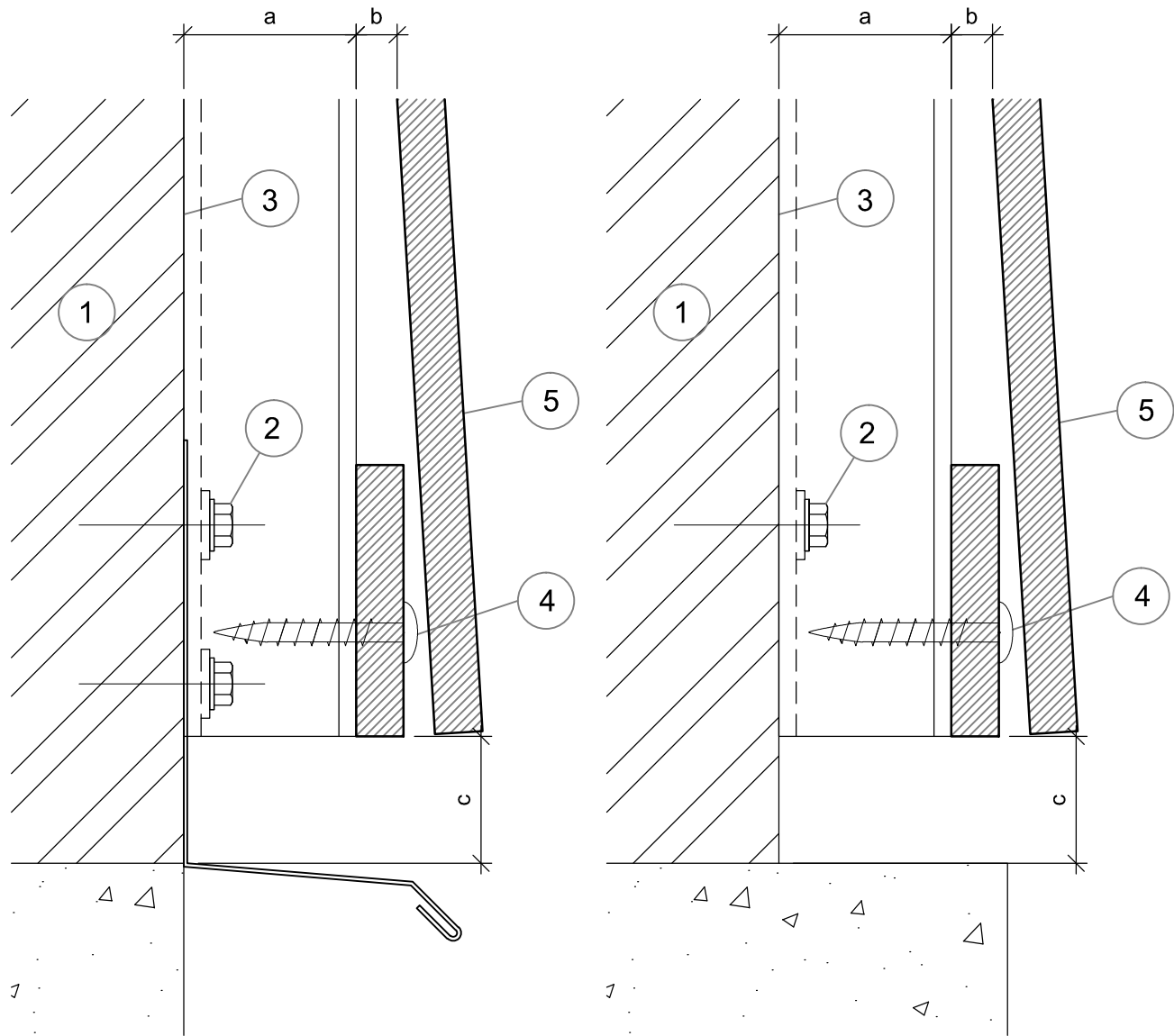
DATE: 09-13-2021

GIRT ORIENTATION: VERTICAL

BASE DETAIL @ GRADE

NOT TO SCALE

MECHANICAL SECRET FIXED LAPPED SYSTEM



WITH FLASHING

ABOVE CONCRETE CURB

Items	
1	Substrate (By Others)
2	Primary fixing will vary subject to substrate composition
3	Aluminum or Steel sub-framing
4	Stainless steel screw A4 4 X35 mm
5	Steni panel maximum height of 7 ¾" (196mm)

Dimensions	
a	1" Cavity
b	¼" Panel nominal thickness (6 mm)
c	¾" from flashing or concrete
* Note! dimension may vary due to the shimming requirement for plumbing and alignment of rails	

SUBSTRATE: VARIES

INSULATION: BY OTHERS (ALL)

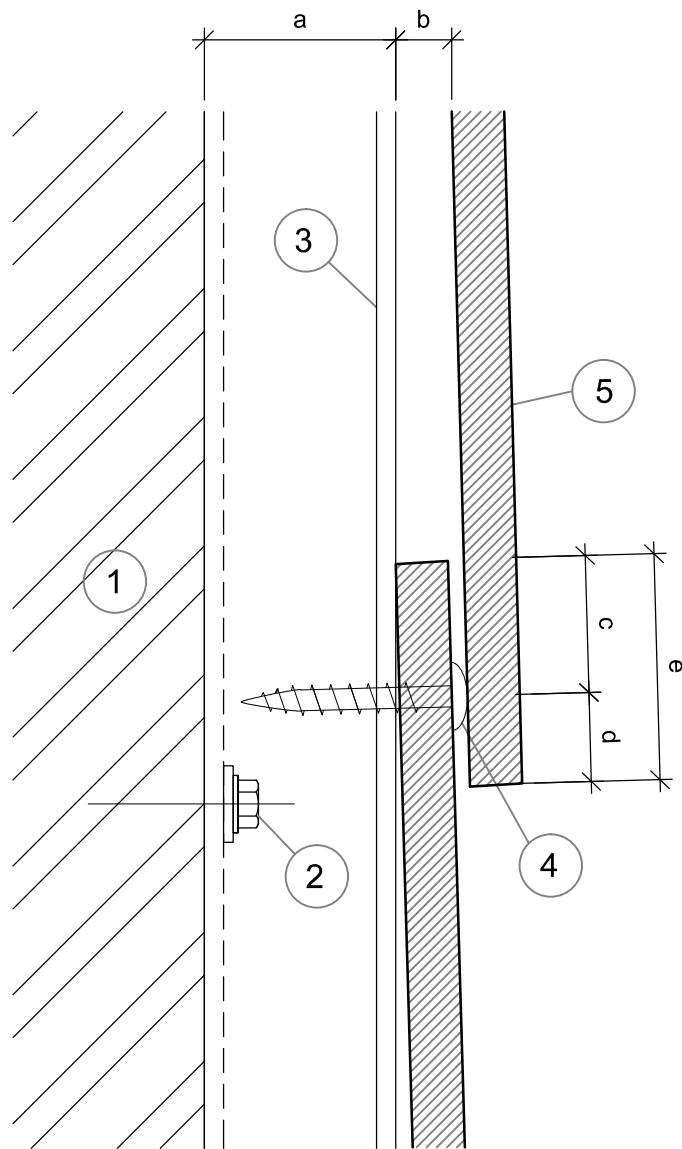
CLADDING: STENI PANEL

DATE: 09-13-2021

GIRT ORIENTATION: VERTICAL

BASE DETAIL

NOT TO SCALE



Items	
1	Substrate (By Others)
2	Primary fixing will vary subject to substrate composition
3	Aluminum or Steel sub-framing
4	Stainless steel screw A4 4 X35 mm
5	Steni panel maximum height of 7 3/4" (196mm)

Dimensions	
a	1" Cavity
b	1/4" Panel nominal thickness (6 mm)
c	13/16" Distance
d	9/16" Distance
e	1 3/8" Distance
* Note! dimension may vary due to the shimming requirement for plumbing and alignment of rails	

SUBSTRATE: VARIES

CLADDING: STENI PANEL

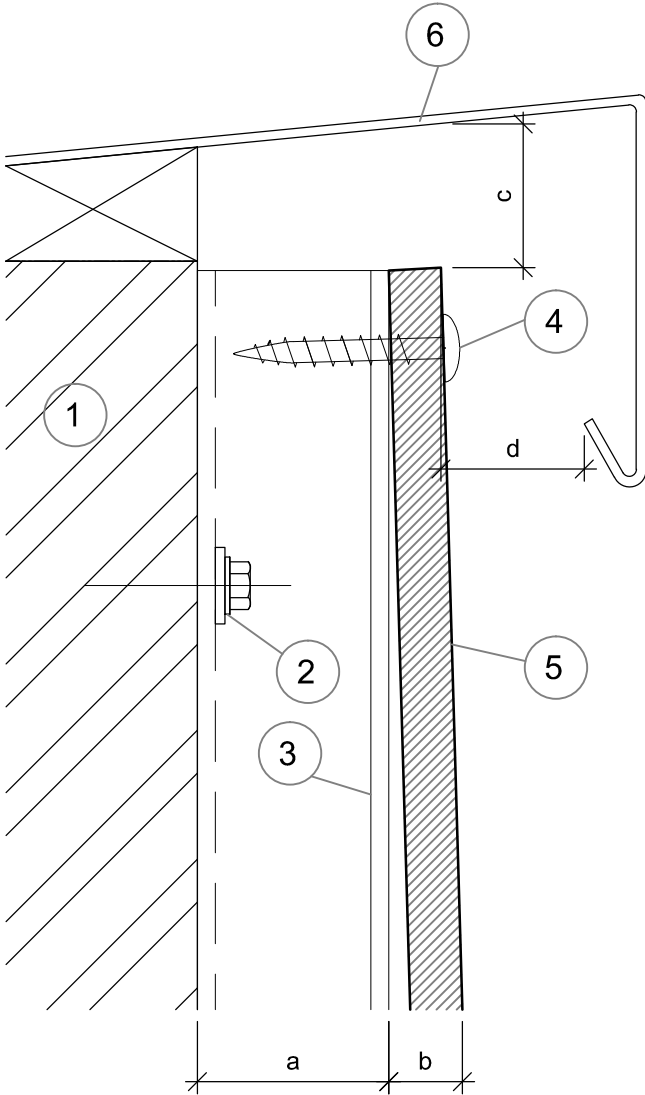
INSULATION: BY OTHERS (ALL)

DATE: 09-13-2021

GIRT ORIENTATION: VERTICAL

TYPICAL HORIZONTAL JOINT DETAIL

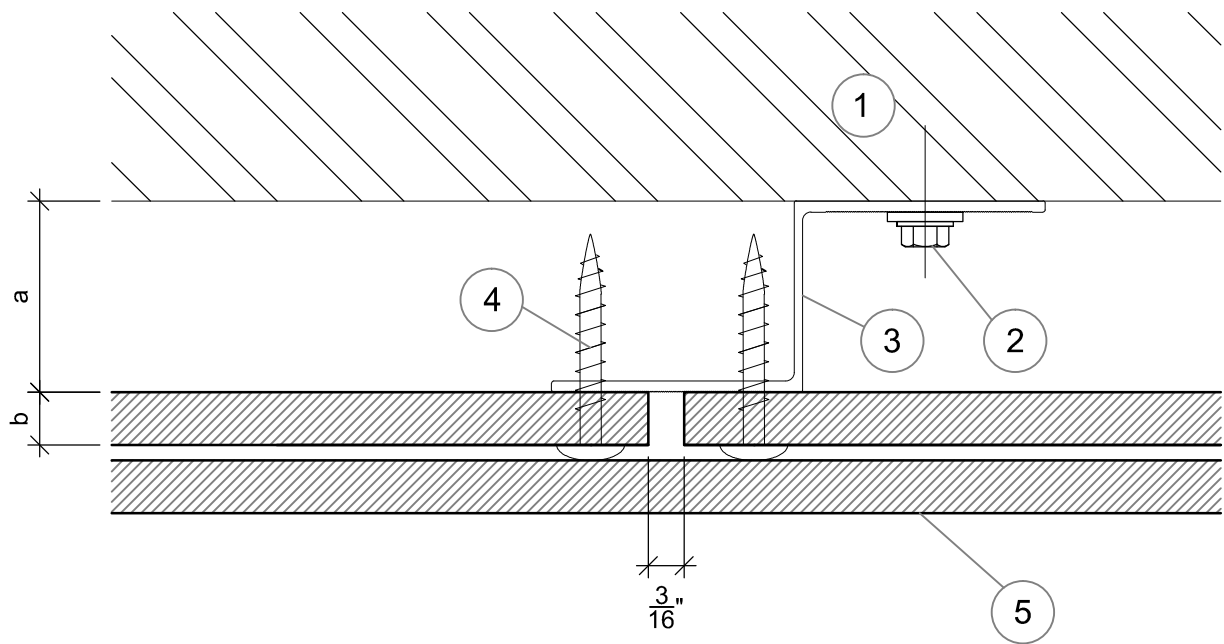
NOT TO SCALE



Items	
1	Substrate (By Others)
2	Primary fixing will vary subject to substrate composition
3	Aluminum or Steel sub-framing
4	Stainless steel screw A4 4 X35 mm
5	Steni panel maximum height of 7 3/4" (196mm)
6	Coping detail to project requirement (By Others)

Dimensions	
a	1" Cavity
b	1/4" Panel nominal thickness (6 mm)
c	3/4" Panel to flashing distance
d	3/4" Distance
* Note! dimension may vary due to the shimming requirement for plumbing and alignment of rails	

SUBSTRATE: VARIES	INSULATION: BY OTHERS (ALL)
CLADDING: STENI PANEL	DATE: 09-13-2021
	GIRT ORIENTATION: VERTICAL



Items	
1	Substrate (By Others)
2	Primary fixing will vary subject to substrate composition
3	Aluminum or Steel sub-framing
4	Stainless steel screw A4 4 X35 mm
5	Steni panel maximum height of 7 3/4" (196mm)

Dimensions	
a	1" Cavity
b	1/4" Panel nominal thickness (6 mm)
c	13/16" Distance
d	9/16" Distance
e	1 3/8" Distance
* Note! dimension may vary due to the shimming requirement for plumbing and alignment of rails	

SUBSTRATE: VARIES

INSULATION: BY OTHERS (ALL)

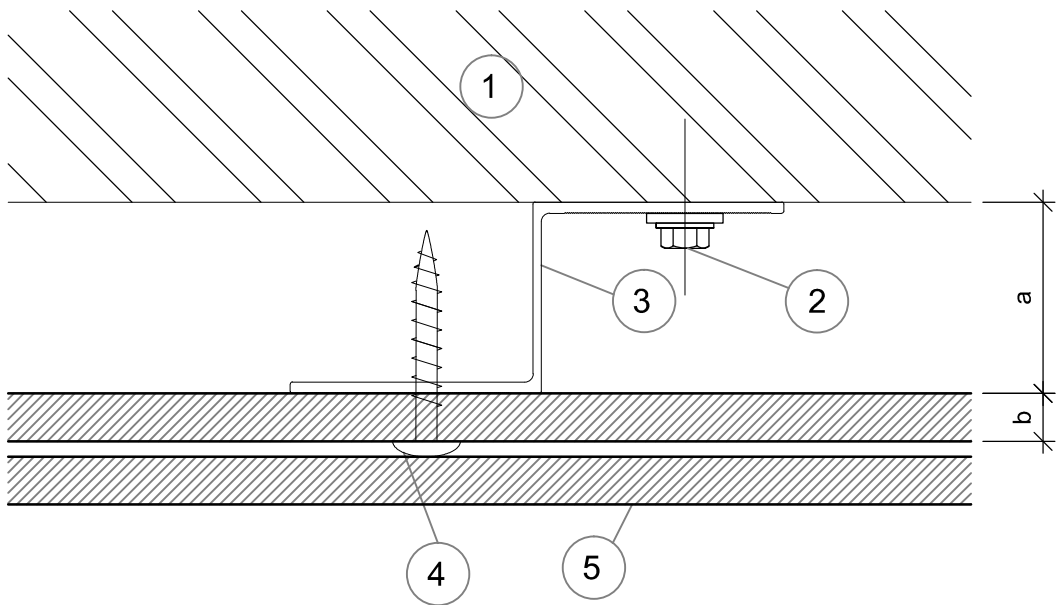
CLADDING: STENI PANEL

DATE: 09-13-2021

GIRT ORIENTATION: VERTICAL

TYPICAL VERTICAL JOINT DETAIL

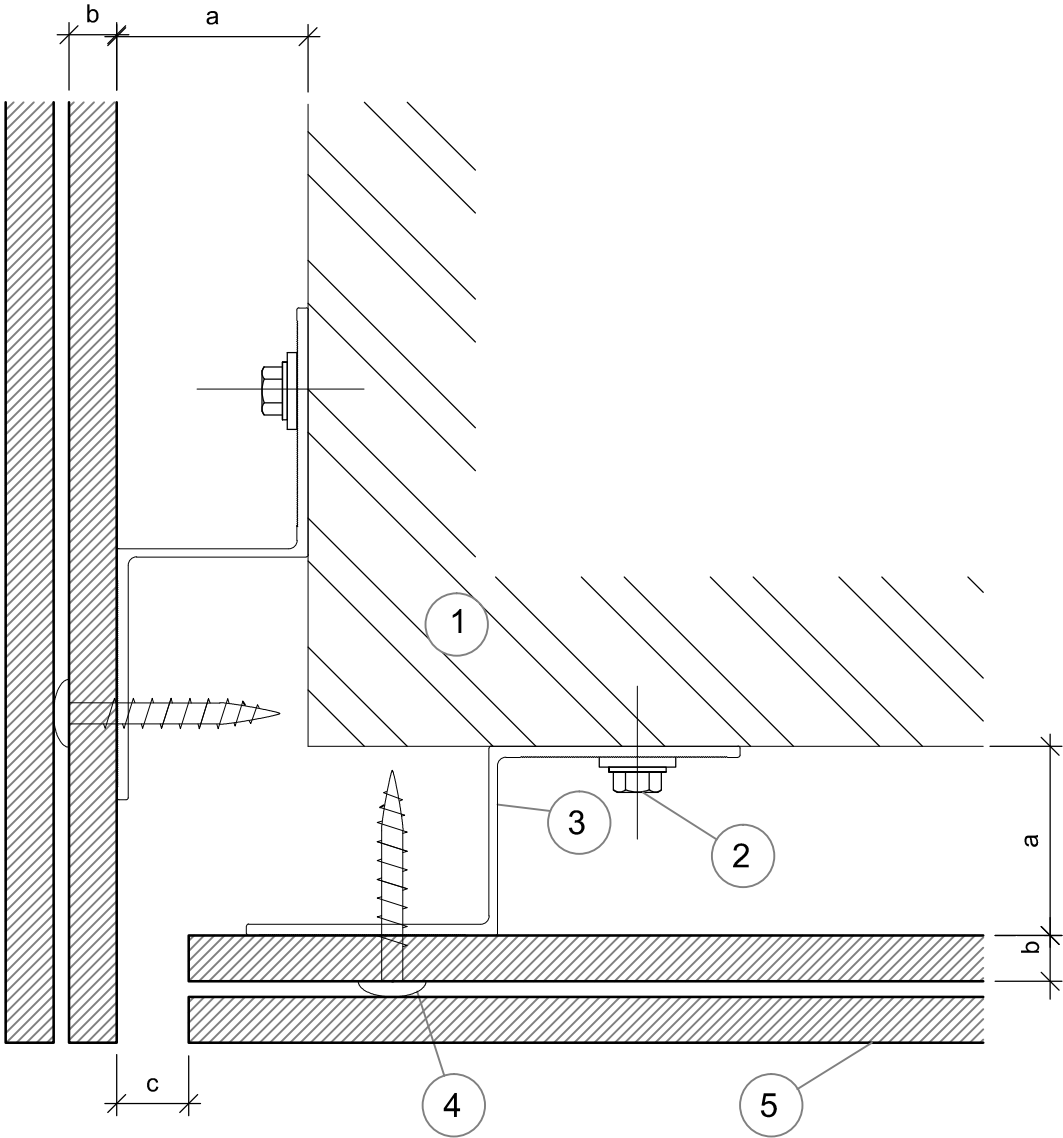
NOT TO SCALE



Items	
1	Substrate (By Others)
2	Primary fixing will vary subject to substrate composition
3	Aluminum or Steel sub-framing
4	Stainless steel screw A4 4 X35 mm
5	Steni panel maximum height of 7 3/4" (196mm)

Dimensions	
a	1" Cavity
b	1/4" Panel nominal thickness (6 mm)
* Note! dimension may vary due to the shimming requirement for plumbing and alignment of rails	

SUBSTRATE: VARIES	INSULATION: BY OTHERS (ALL)
CLADDING: STENI PANEL	DATE: 09-13-2021
	GIRT ORIENTATION: VERTICAL



Items	
1	Substrate (By Others)
2	Primary fixing will vary subject to substrate composition
3	Aluminum or Steel sub-framing
4	Stainless steel screw A4 4 X35 mm
5	Steni panel maximum height of 7 ¾" (196mm)

Dimensions	
a	1" Cavity
b	¼" Panel nominal thickness (6 mm)
c	¾" Panel joint
* Note! dimension may vary due to the shimming requirement for plumbing and alignment of rails	

SUBSTRATE: VARIES

INSULATION: BY OTHERS (ALL)

CLADDING: STENI PANEL

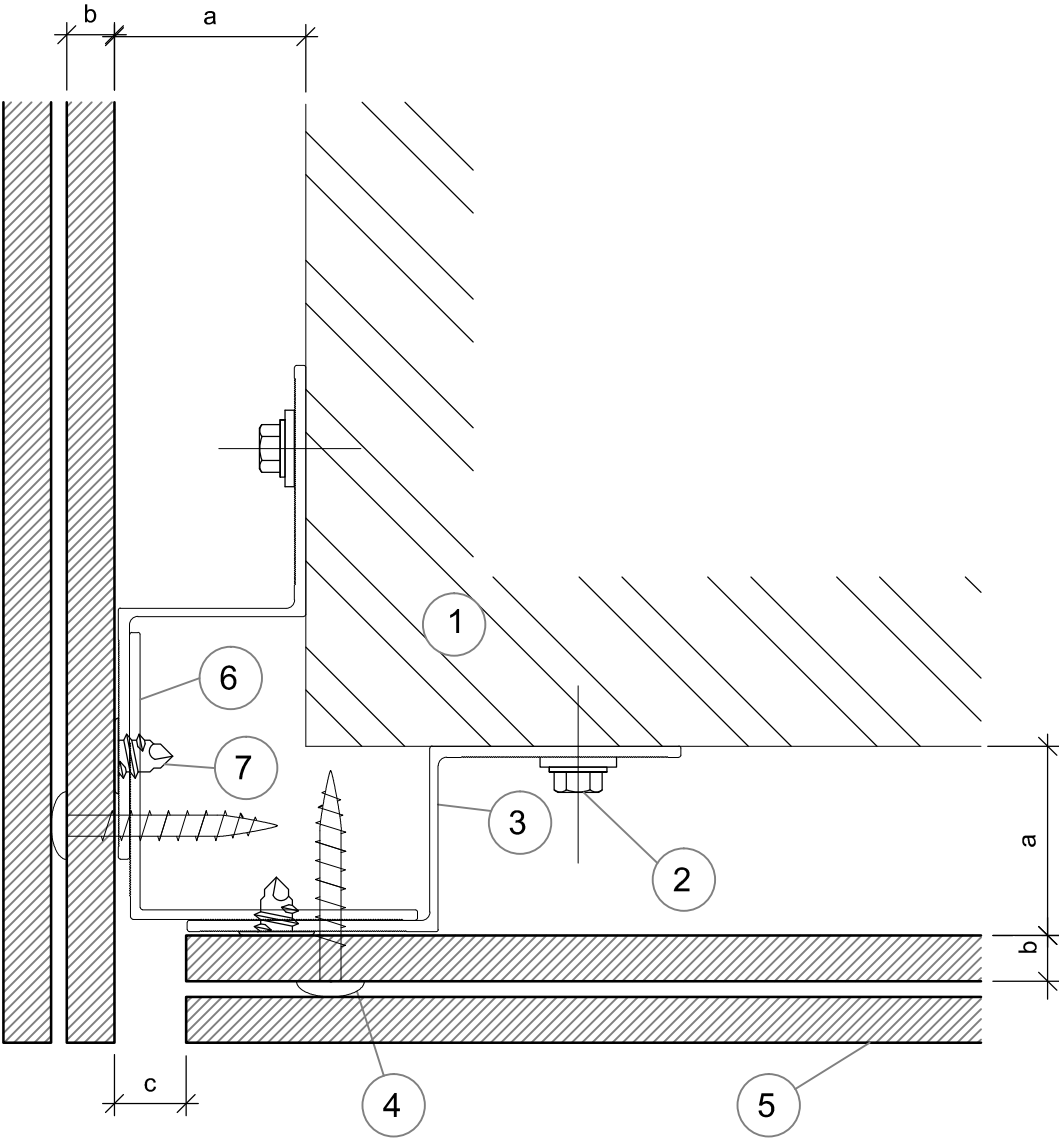
DATE: 09-13-2021

GIRT ORIENTATION: VERTICAL

OUTSIDE CORNER DETAIL (OPEN CORNER)

NOT TO SCALE

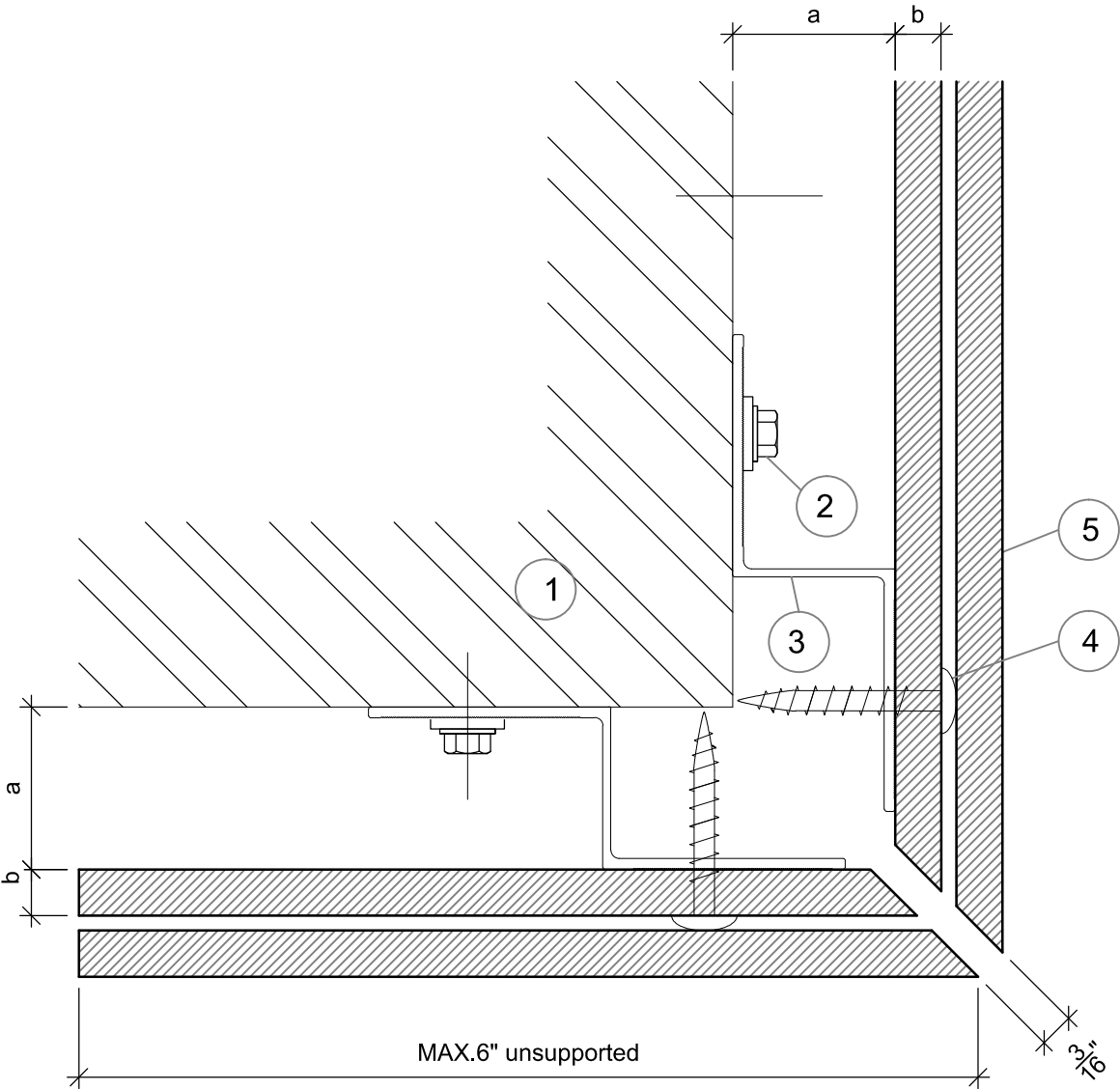




Items	
1	Substrate (By Others)
2	Primary fixing will vary subject to substrate composition
3	Aluminum or Steel sub-framing
4	Stainless steel screw A4 4 X35 mm
5	Steni panel maximum height of 7 ¾" (196mm)
6	Prefinished L-angle for adhered corner
7	Flat head screw by others

Dimensions	
a	1" Cavity
b	¼" Panel nominal thickness (6 mm)
c	¾" Panel joint
* Note! dimension may vary due to the shimming requirement for plumbing and alignment of rails	

SUBSTRATE: VARIES	INSULATION: BY OTHERS (ALL)
CLADDING: STENI PANEL	DATE: 09-13-2021
	GIRT ORIENTATION: VERTICAL



OPTIONAL DETAIL

Items	
1	Substrate (By Others)
2	Primary fixing will vary subject to substrate composition
3	Aluminum or Steel sub-framing
4	Stainless steel screw A4 4 X35 mm
5	Steni panel maximum height of 7 ¾" (196mm)

Dimensions	
a	1" Cavity
b	¼" Panel nominal thickness (6 mm)
* Note! dimension may vary due to the shimming requirement for plumbing and alignment of rails	

SUBSTRATE: VARIES

CLADDING: STENI PANEL

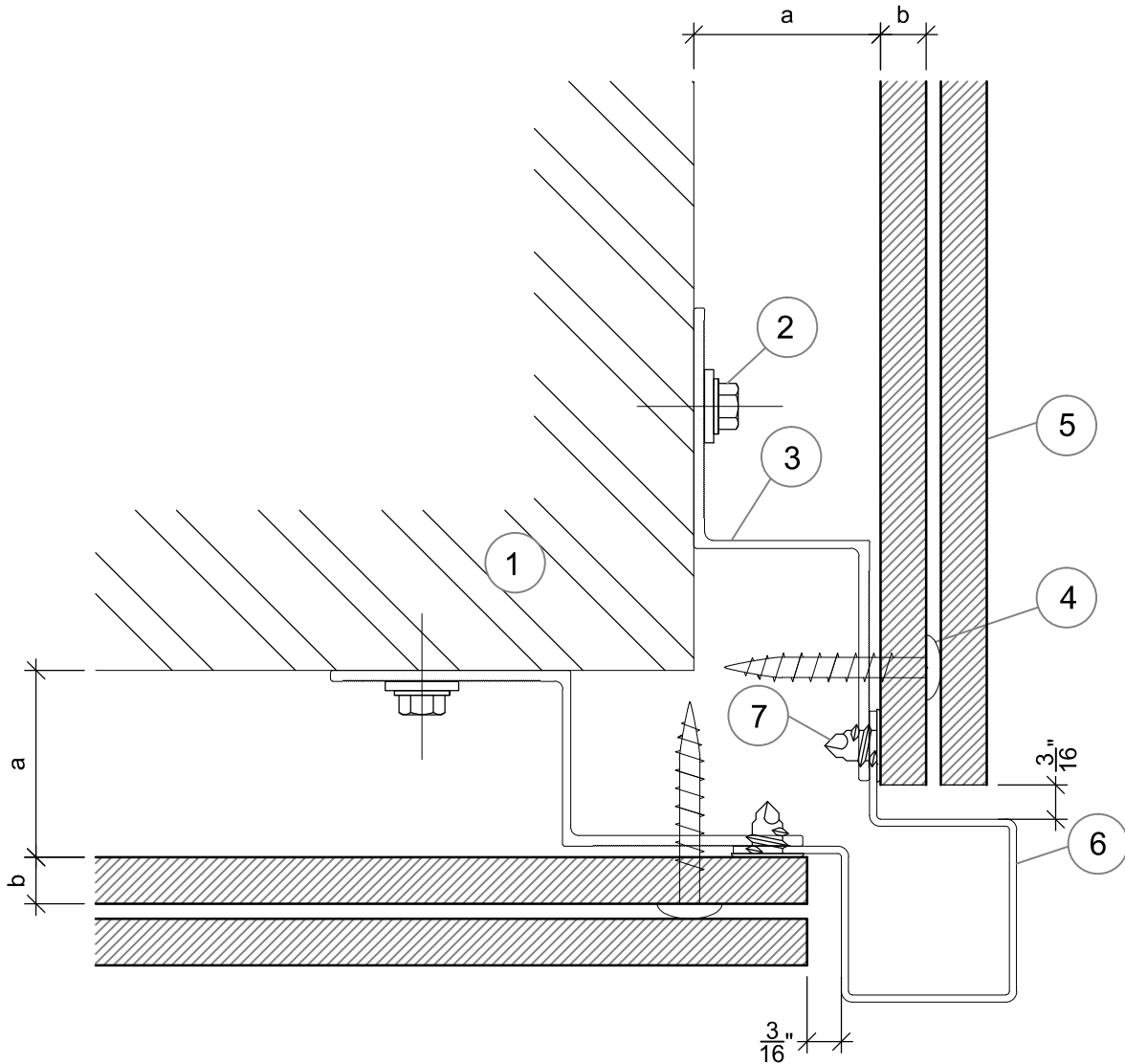
INSULATION: BY OTHERS (ALL)

DATE: 09-13-2021

GIRT ORIENTATION: VERTICAL

OUTSIDE CORNER DETAIL ( OPEN CORNER )

NOT TO SCALE

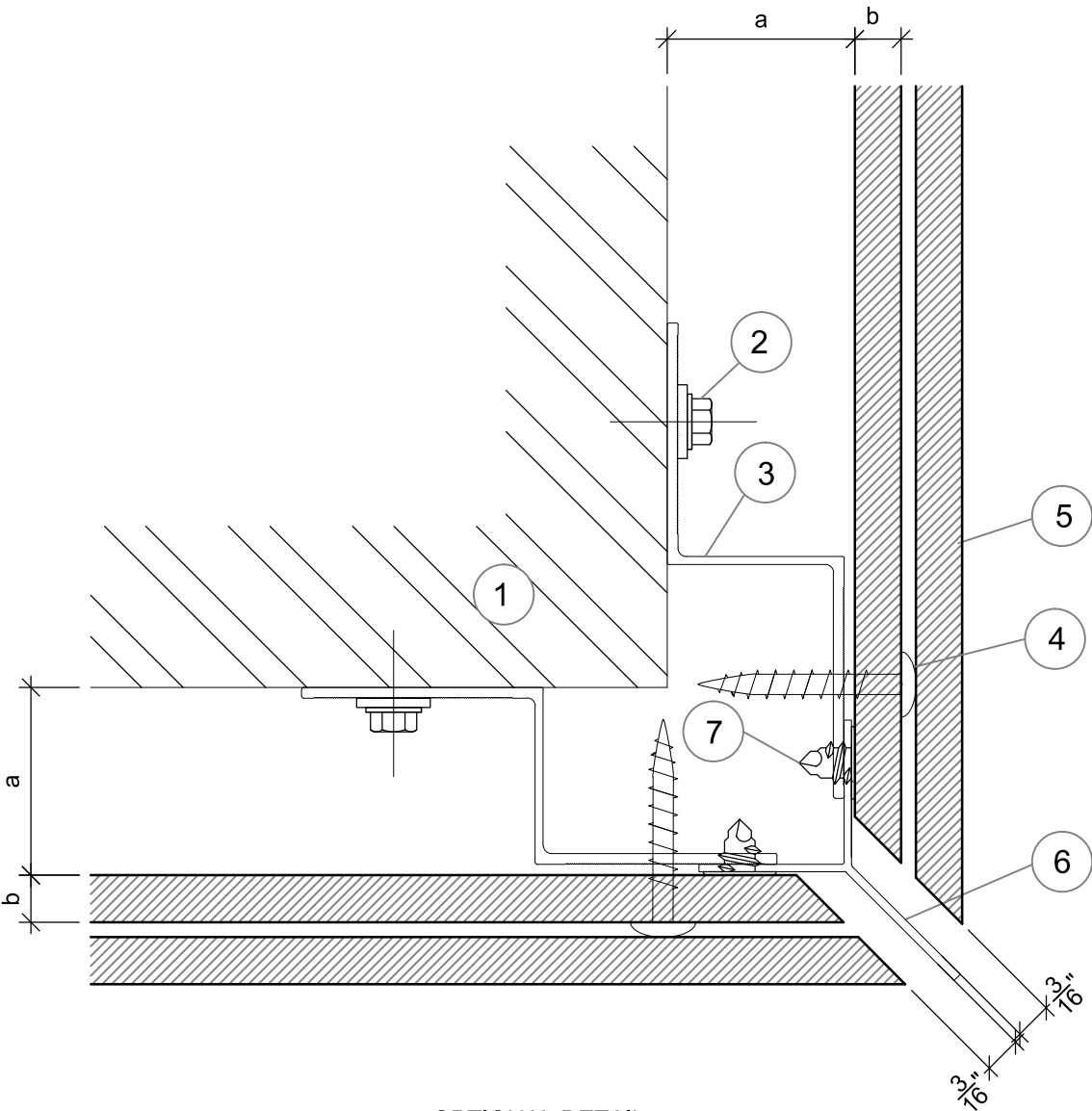


OPTIONAL DETAIL

Items	
1	Substrate (By Others)
2	Primary fixing will vary subject to substrate composition
3	Aluminum or Steel sub-framing
4	Stainless steel screw A4 4 X35 mm
5	Steni panel maximum height of 7 3/4" (196mm)
6	Corner profile Cp-15-18-33
7	Flat head screw by others

Dimensions	
a	1" Cavity
b	1/4" Panel nominal thickness (6 mm)
* Note! dimension may vary due to the shimming requirement for plumbing and alignment of rails	

SUBSTRATE:VARIES	INSULATION: BY OTHERS (ALL)
CLADDING: STENI PANEL	DATE: 09-13-2021
	GIRT ORIENTATION: VERTICAL



Items	
1	Substrate (By Others)
2	Primary fixing will vary subject to substrate composition
3	Aluminum or Steel sub-framing
4	Stainless steel screw A4 4 X35 mm
5	Steni panel maximum height of 7 ¾" (196mm)
6	Corner profile Cp-15-13
7	Flat head screw by others

Dimensions	
a	1" Cavity
b	¼" Panel nominal thickness (6 mm)
* Note! dimension may vary due to the shimming requirement for plumbing and alignment of rails	

SUBSTRATE: VARIES

CLADDING: STENI PANEL

INSULATION: BY OTHERS (ALL)

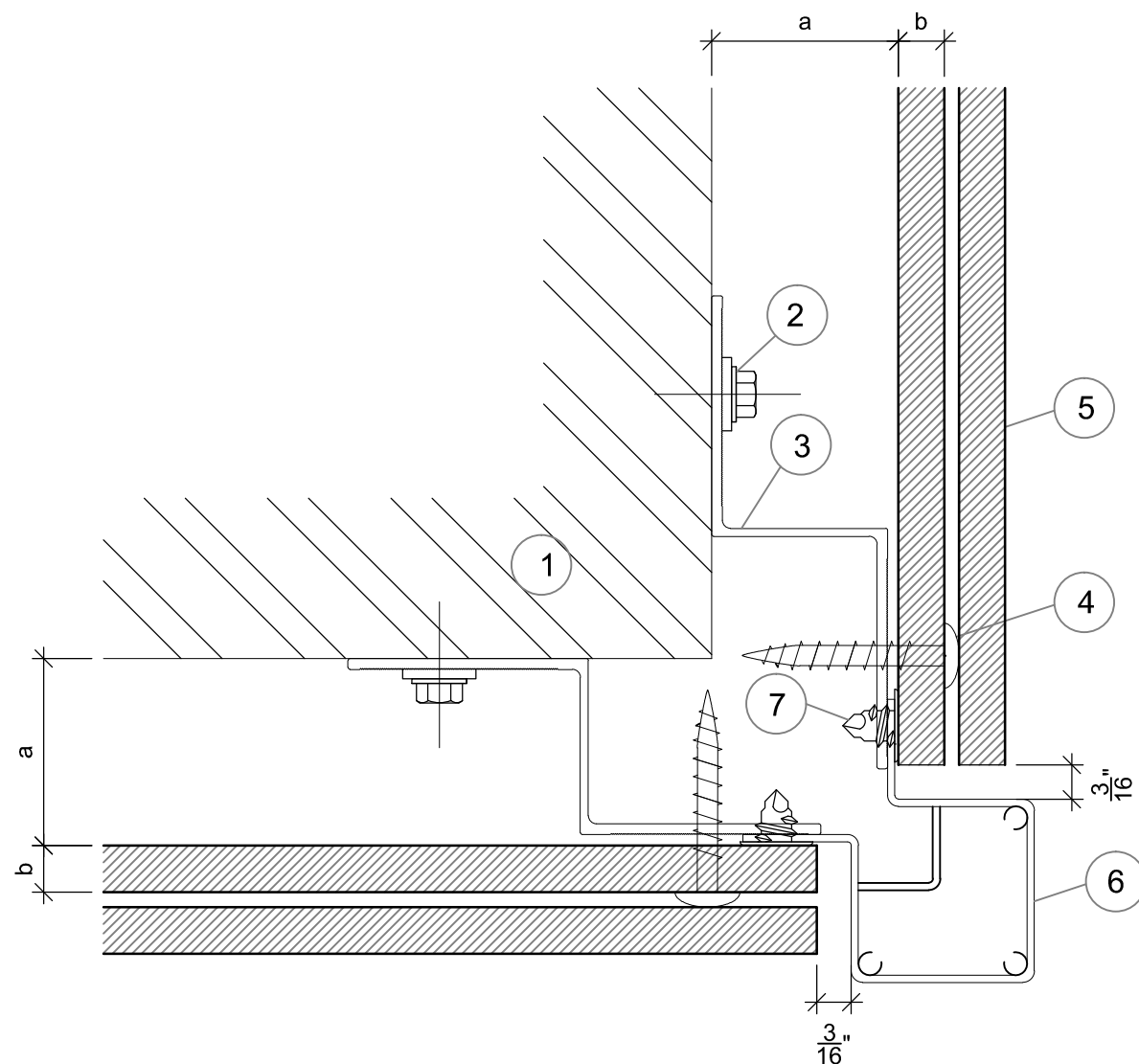
DATE: 09-13-2021

GIRT ORIENTATION: VERTICAL

OUTSIDE CORNER DETAIL W / EXTRUSION

NOT TO SCALE

# MECHANICAL SECRET FIXED LAPPED SYSTEM



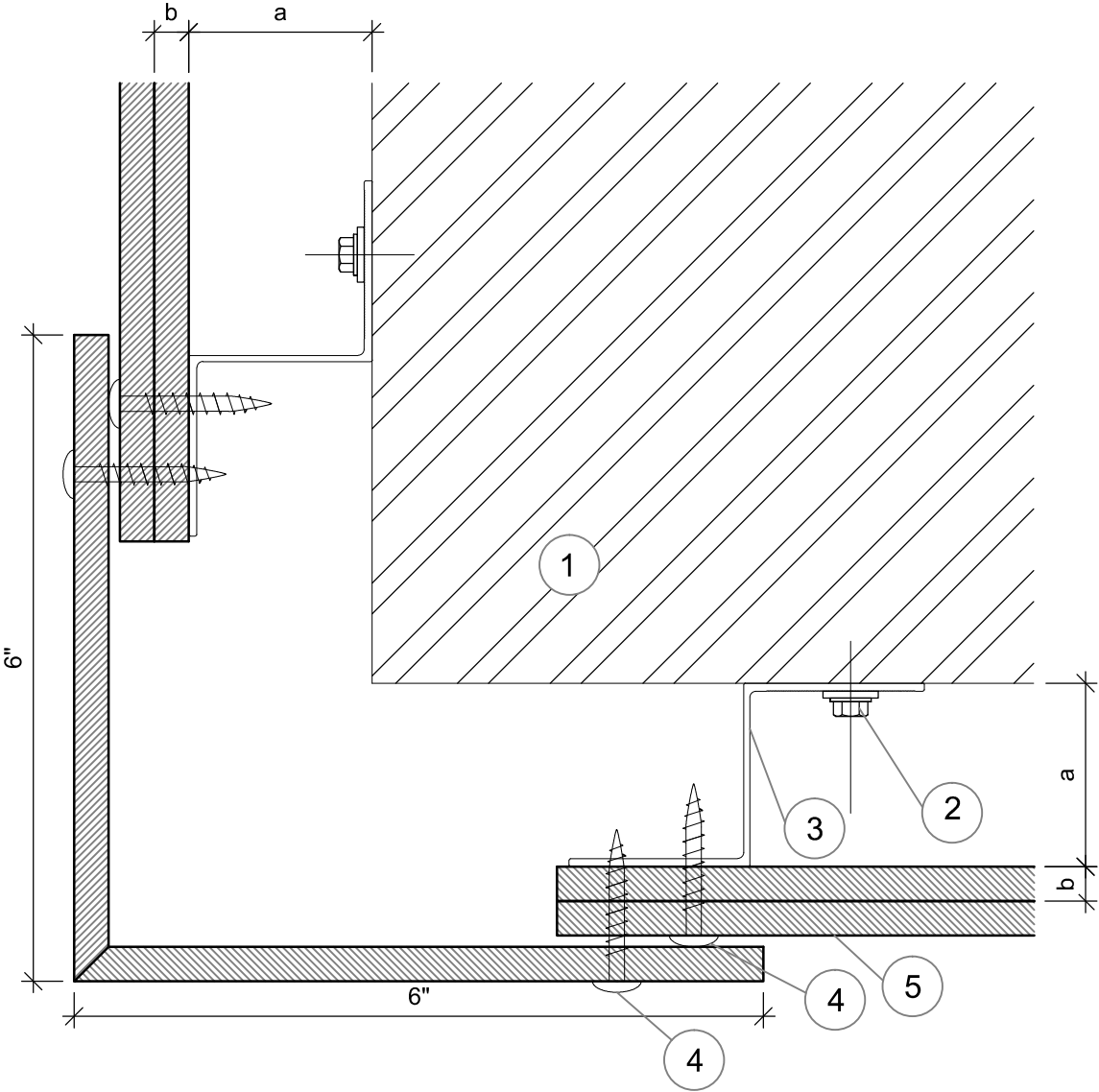
### OPTIONAL DETAIL

Items	
1	Substrate (By Others)
2	Primary fixing will vary subject to substrate composition
3	Aluminum or Steel sub-framing
4	Stainless steel screw A4 4 X35 mm
5	Steni panel maximum height of 7 <sup>3</sup> / <sub>4</sub> " (196mm)
6	Corner profile Cp-15-25-40
7	Flat head screw by others

Dimensions	
a	1" Cavity
b	¼" Panel nominal thickness (6 mm)
* Note! dimension may vary due to the shimming requirement for plumbing and alignment of rails	

\* Note! dimension may vary due to the shimming requirement for plumbing and alignment of rails

SUBSTRATE: VARIES	INSULATION: BY OTHERS (ALL)	<div> <div>OUTSIDE CORNER DETAIL W / EXTRUSION</div> <div>NOT TO SCALE</div> <div>12</div> </div>
CLADDING: STENI PANEL	DATE: 09-13-2021	
	GIRT ORIENTATION: VERTICAL	

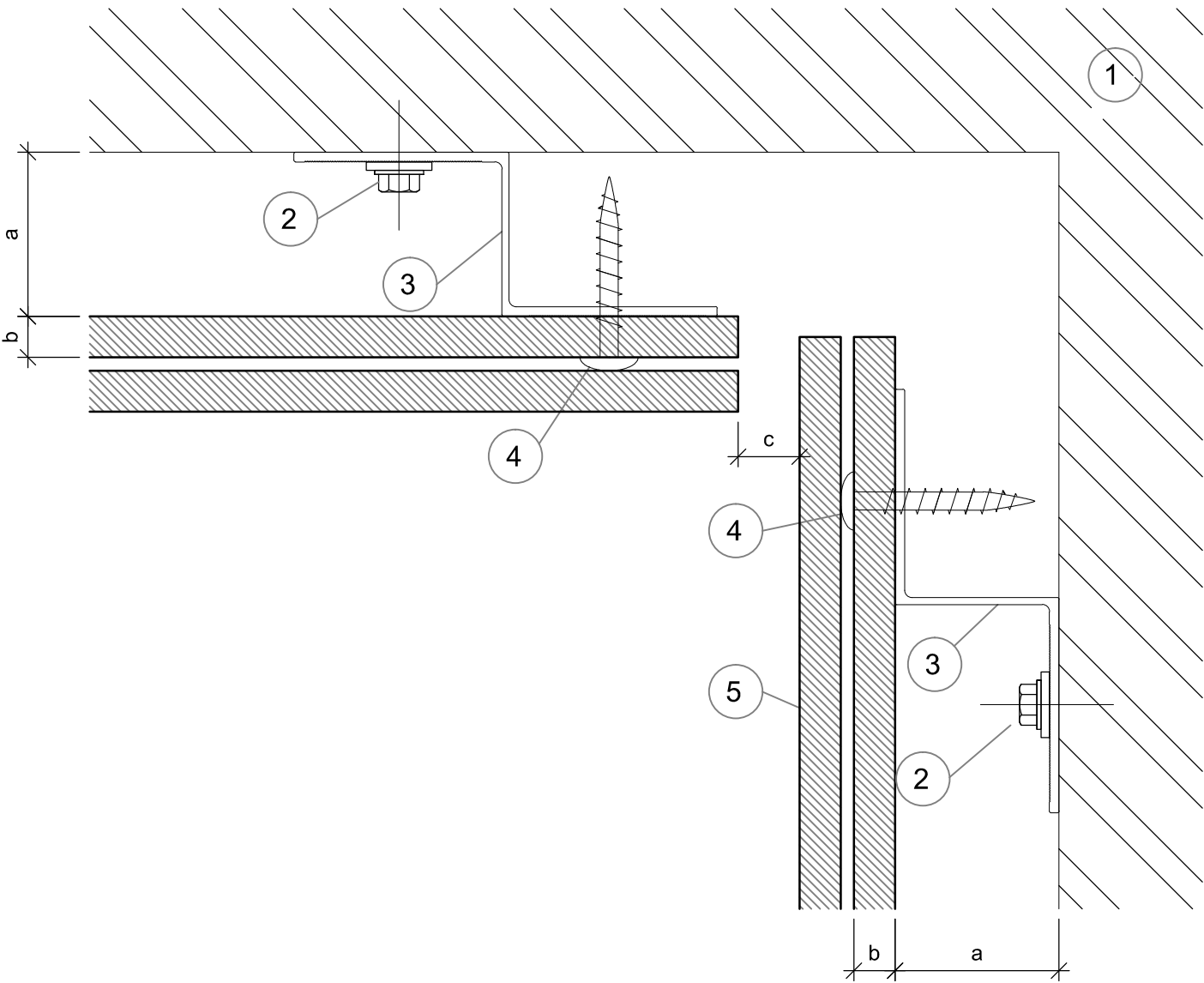


Items	
1	Substrate (By Others)
2	Primary fixing will vary subject to substrate composition
3	Aluminum or Steel sub-framing
4	Stainless steel screw A4 4 X35 mm
5	Steni panel maximum height of 7 ¾" (196mm)

Dimensions	
a	1" Cavity
b	¼" Panel nominal thickness (6 mm)
* Note! dimension may vary due to the shimming requirement for plumbing and alignment of rails	

SUBSTRATE: VARIES	INSULATION: BY OTHERS (ALL)
CLADDING: STENI PANEL	DATE: 09-13-2021
	GIRT ORIENTATION: VERTICAL

L ELEMENT FIXING DETAIL  
NOT TO SCALE



Items	
1	Substrate (By Others)
2	Primary fixing will vary subject to substrate composition
3	Aluminum or Steel sub-framing
4	Stainless steel screw A4 4 X28 mm
5	Steni panel maximum height of 7 3/4" (196mm)

Dimensions	
a	1" Cavity
b	1/4" Panel nominal thickness (6 mm)
c	3/8" Panel joint
* Note! dimension may vary due to the shimming requirement for plumbing and alignment of rails	

SUBSTRATE: VARIES

INSULATION: BY OTHERS (ALL)

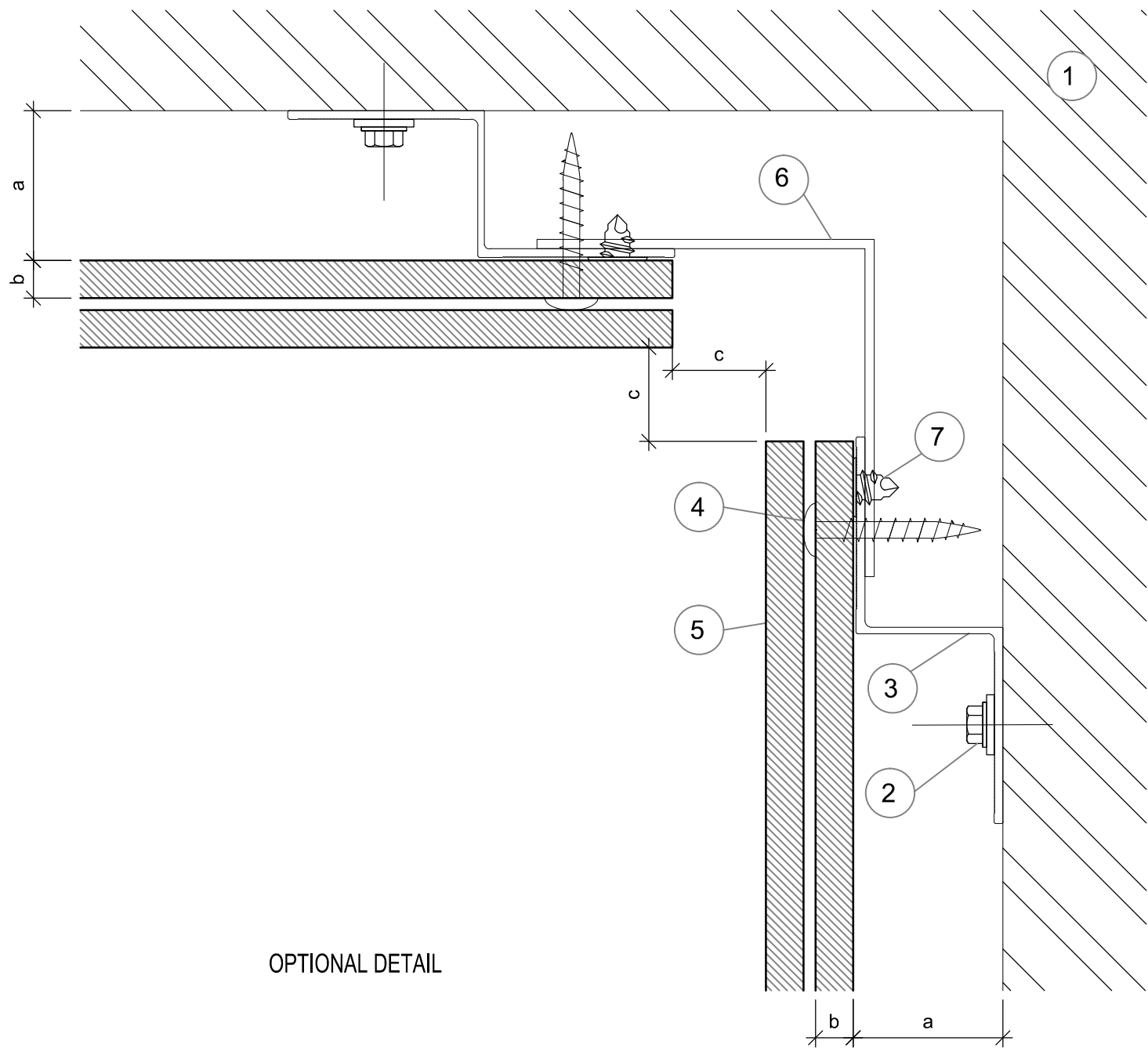
CLADDING: ---

DATE: 09-13-2021

GIRT ORIENTATION: VERTICAL

INSIDE CORNER DETAIL

NOT TO SCALE

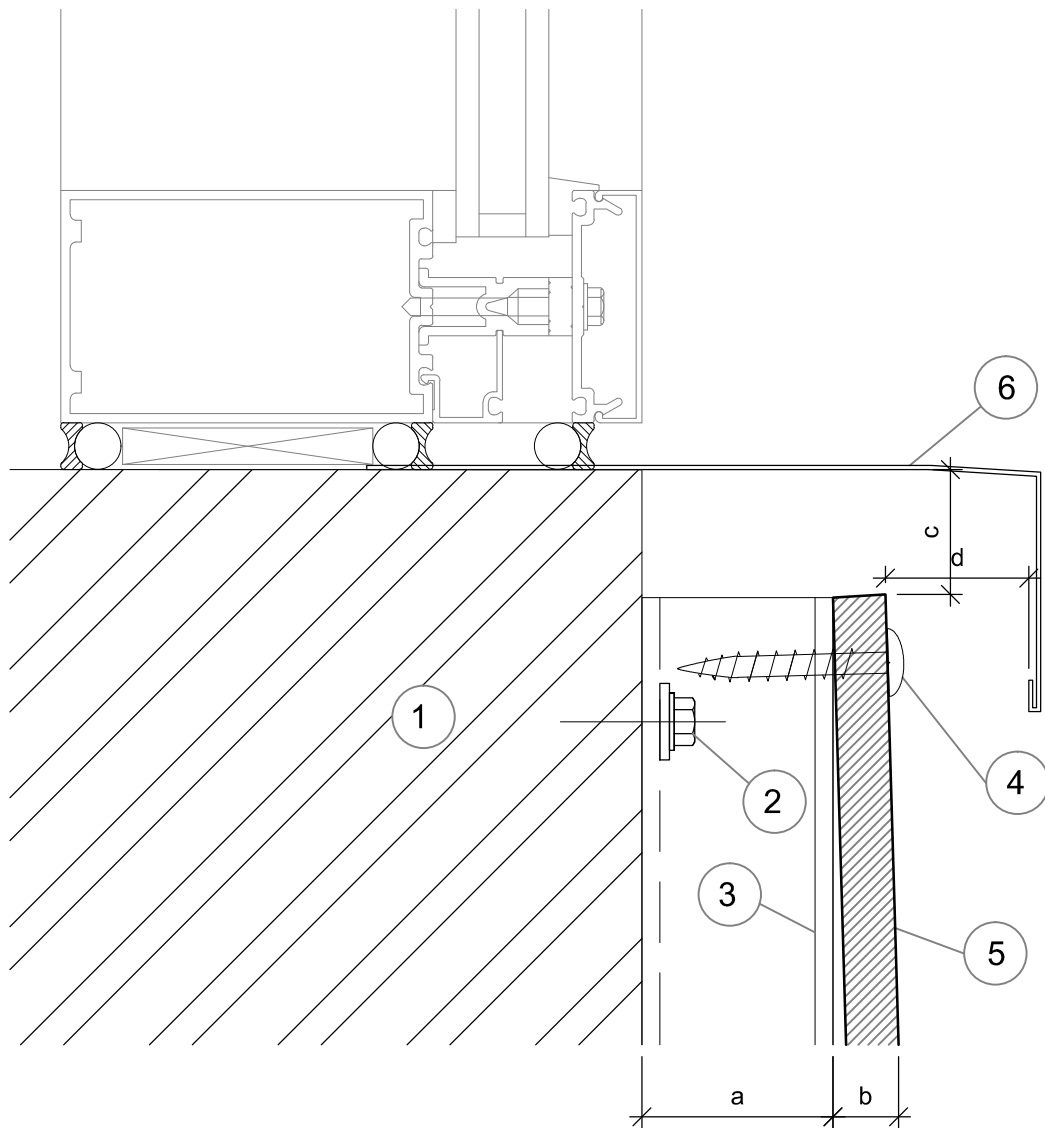


Items	
1	Substrate (By Others)
2	Primary fixing will vary subject to substrate composition
3	Aluminum or Steel sub-framing
4	Stainless steel screw A4 4 X28 mm
5	Steni panel maximum height of 7 ¾" (196mm)
6	Prefinished L-angle for adhered corner
7	Flat head screw by others

Dimensions	
a	1" Cavity
b	¼" Panel nominal thickness (6 mm)
c	5⁄8" Panel joint
* Note! dimension may vary due to the shimming requirement for plumbing and alignment of rails	

SUBSTRATE: VARIES	INSULATION: BY OTHERS (ALL)
CLADDING: ---	DATE: 09-13-2021
	GIRT ORIENTATION: VERTICAL

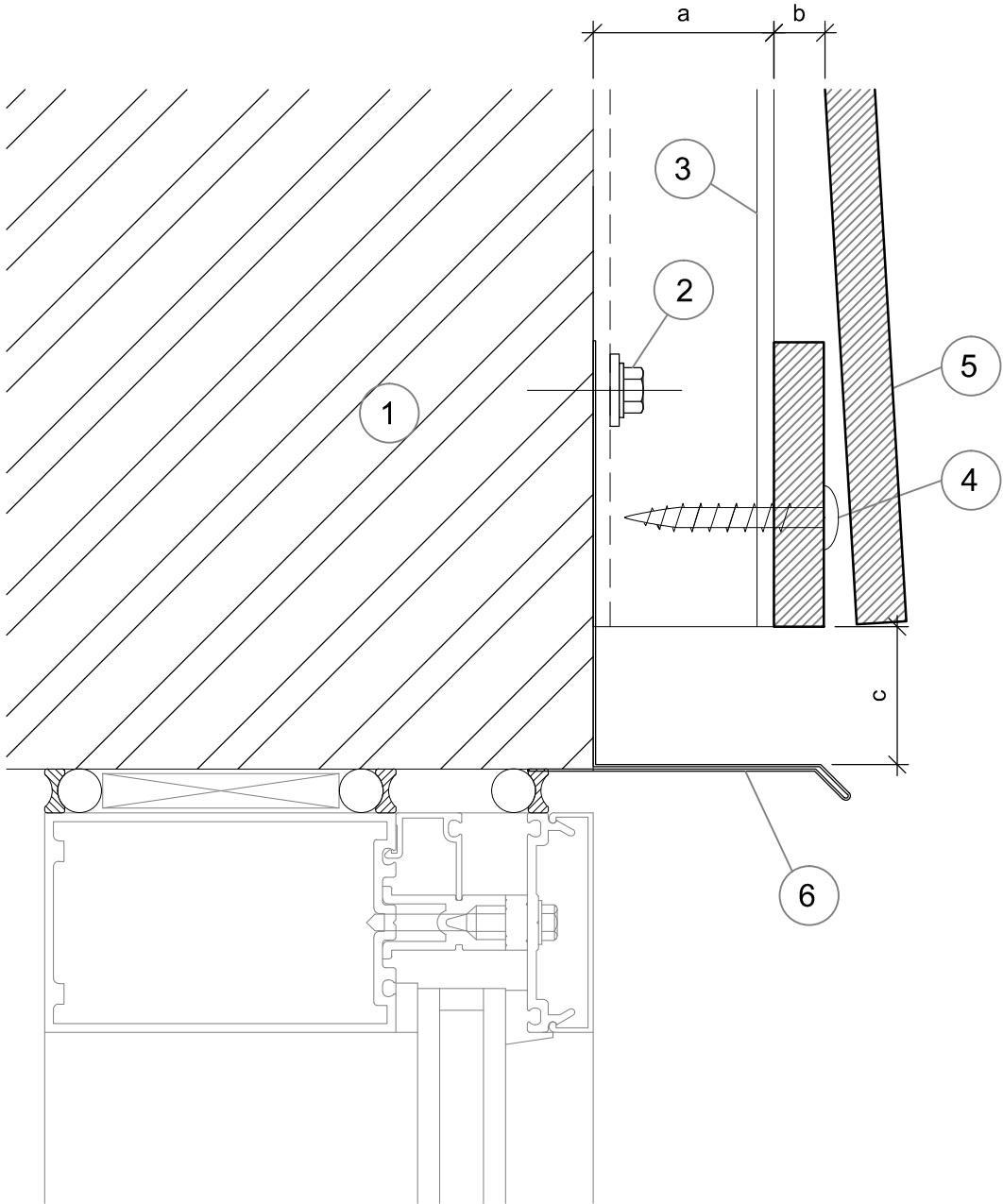




Items	
1	Substrate (By Others)
2	Primary fixing will vary subject to substrate composition
3	Aluminum or Steel sub-framing
4	Stainless steel screw A4 4 X35 mm
5	Steni panel maximum height of 7 3/4" (196mm)
6	Window detail to project requirement (By Others)

Dimensions	
a	1" Cavity
b	1/4" Panel nominal thickness (6 mm)
c	3/4" Panel to flashing distance
d	3/4" Distance
* Note! dimension may vary due to the shimming requirement for plumbing and alignment of rails	

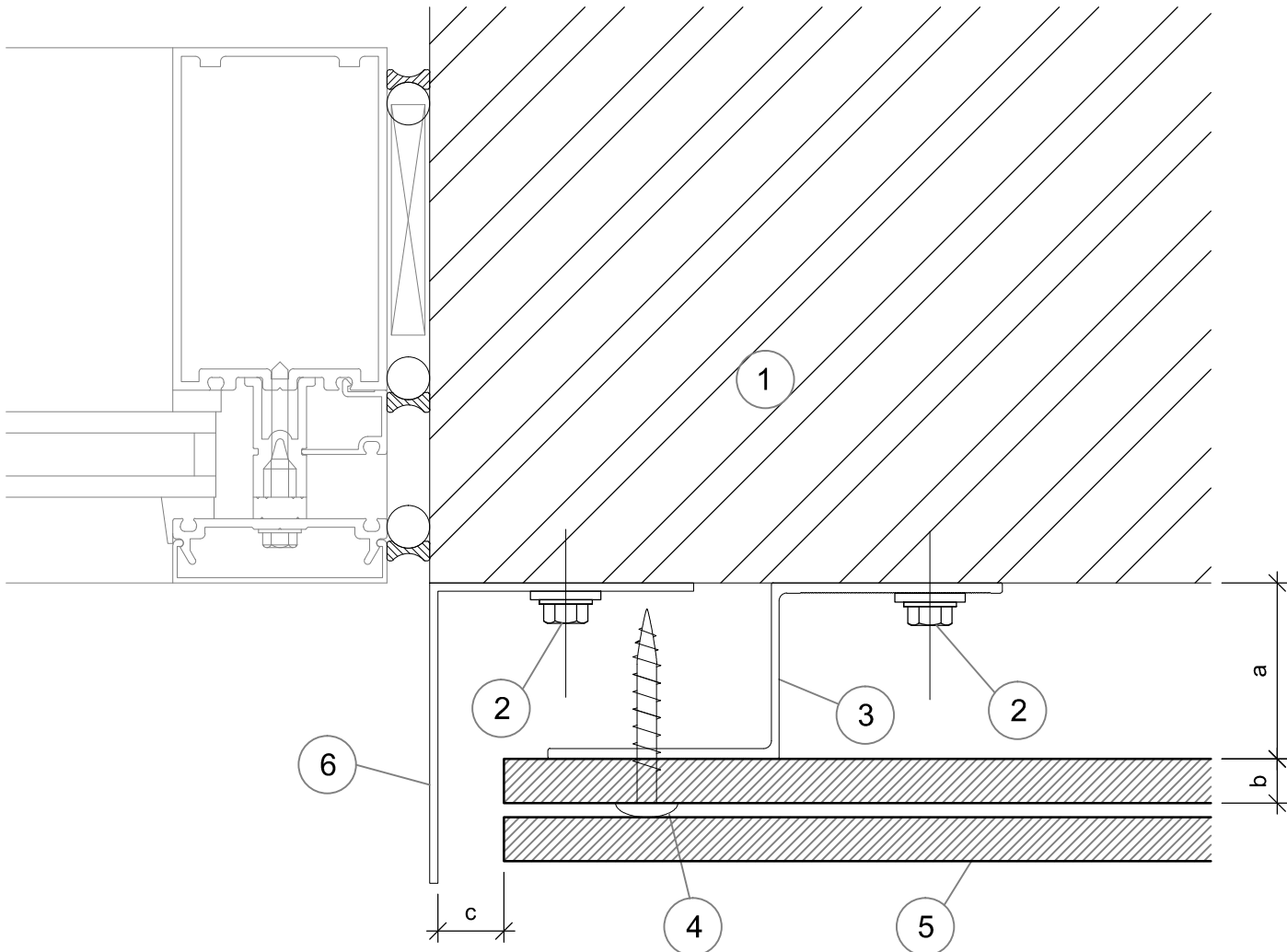
SUBSTRATE: VARIES	INSULATION: BY OTHERS (ALL)
CLADDING: STENI PANEL	DATE: 09-13-2021
	GIRT ORIENTATION: VERTICAL



Items	
1	Substrate (By Others)
2	Primary fixing will vary subject to substrate composition
3	Aluminum or Steel sub-framing
4	Stainless steel screw A4 4 X35 mm
5	Steni panel maximum height of 7 ¾" (196mm)
6	Window detail to project requirement (By Others)

Dimensions	
a	1" Cavity
b	¼" Panel nominal thickness (6 mm)
c	¾" Panel to flashing distance
* Note! dimension may vary due to the shimming requirement for plumbing and alignment of rails	

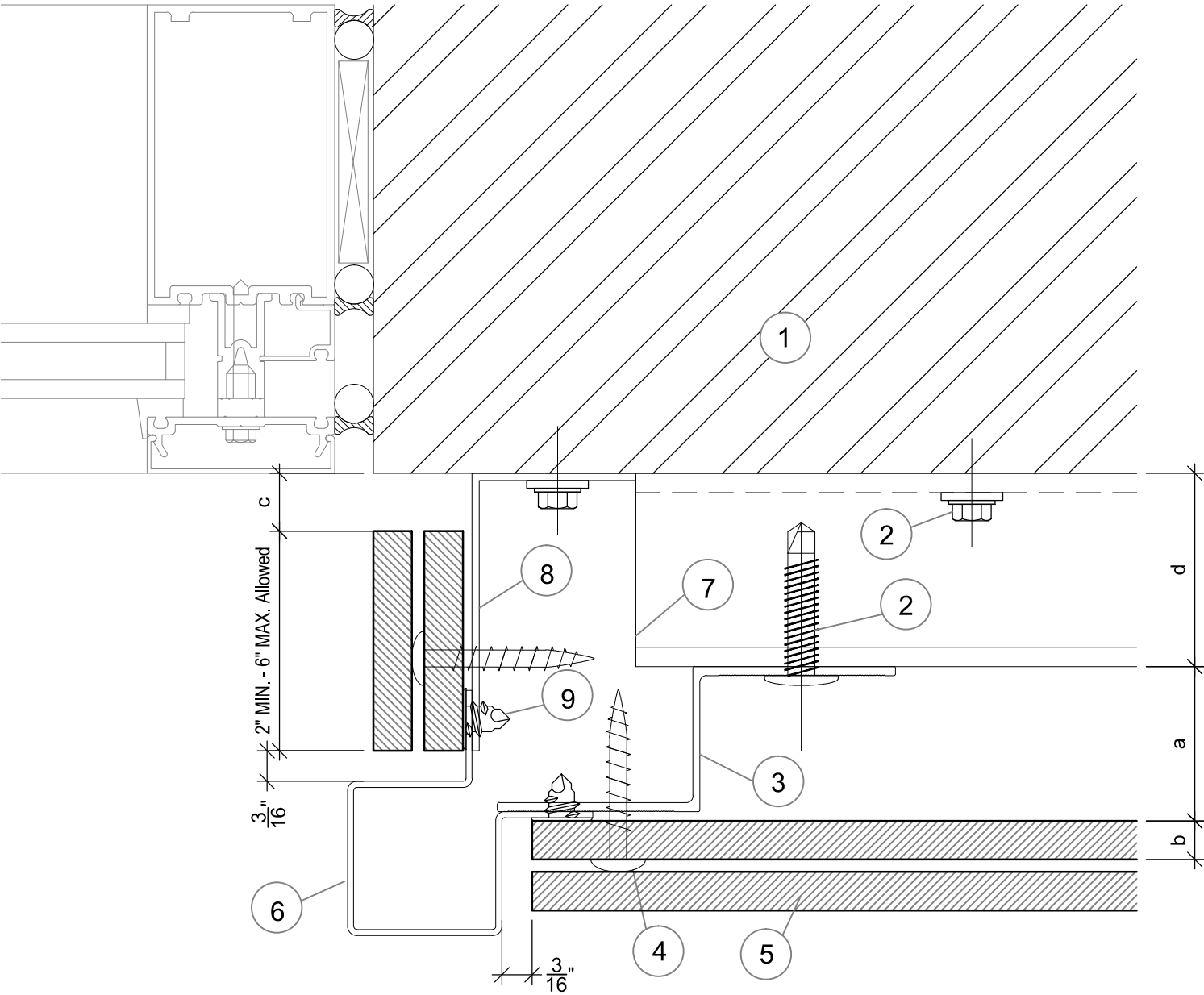
SUBSTRATE: VARIES	INSULATION: BY OTHERS (ALL)
CLADDING: STENI PANEL	DATE: 09-13-2021
	GIRT ORIENTATION: VERTICAL



Items	
1	Substrate (By Others)
2	Primary fixing will vary subject to substrate composition
3	Aluminum or Steel sub-framing
4	Stainless steel screw A4 4 X35 mm
5	Steni panel maximum height of 7 ¾" (196mm)
6	Window detail to project requirement (By Others)

Dimensions	
a	1" Cavity
b	¼" Panel nominal thickness (6 mm)
c	¾" Panel to flashing distance
* Note! dimension may vary due to the shimming requirement for plumbing and alignment of rails	

SUBSTRATE: VARIES	INSULATION: BY OTHERS (ALL)
CLADDING: STENI PANEL	DATE: 09-13-2021
	GIRT ORIENTATION: VERTICAL



OPTIONAL DETAIL

Items	
1	Substrate (By Others)
2	
3	Aluminum or Steel sub-framing
4	Stainless steel screw A4 4 X35 mm color to match panel
5	Steni panel maximum height of 7 3/4" (196mm)
6	Corner profile Cp-15-18-33
7	Aluminum or Steel sub-framing
8	Prefinished L-angle for adhered corner
9	Flat head screw by others

Dimensions	
a	1" Cavity
b	1/4" Panel nominal thickness (6 mm)
c	3/8" Panel Joint
d	Free vertical ventilation gap must be at least 1" and as recommended by local building regs.
* Note! dimension may vary due to the shimming requirement for plumbing and alignment of rails	

SUBSTRATE: VARIES

INSULATION: BY OTHERS (ALL)

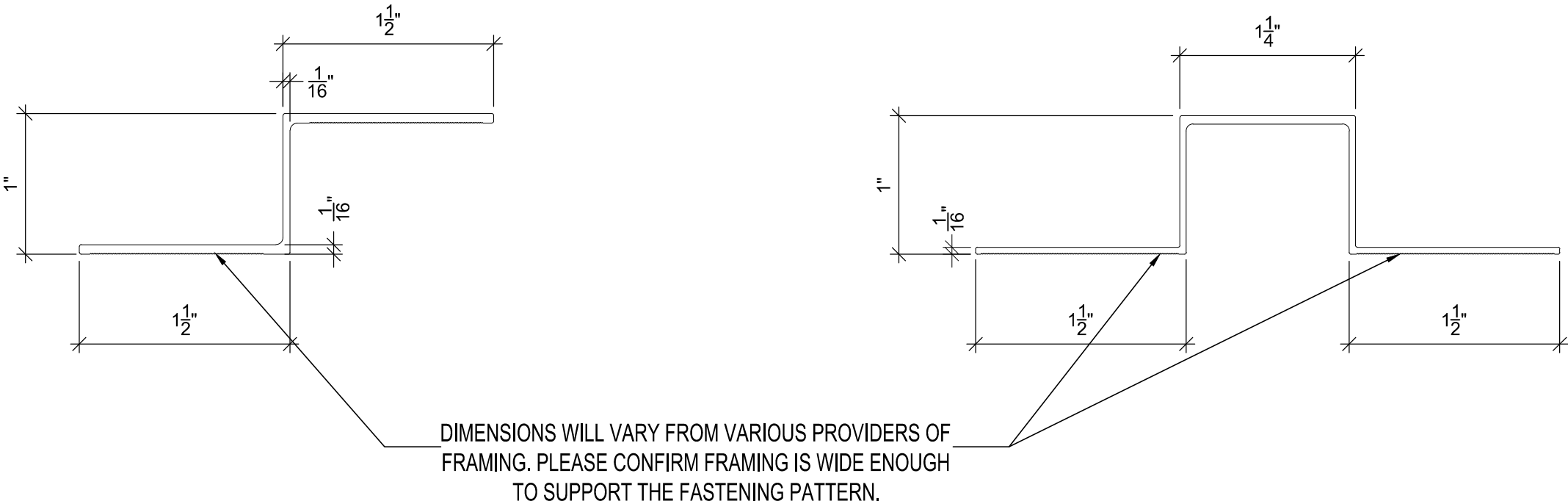
CLADDING: STENI PANEL

DATE: 09-13-2021

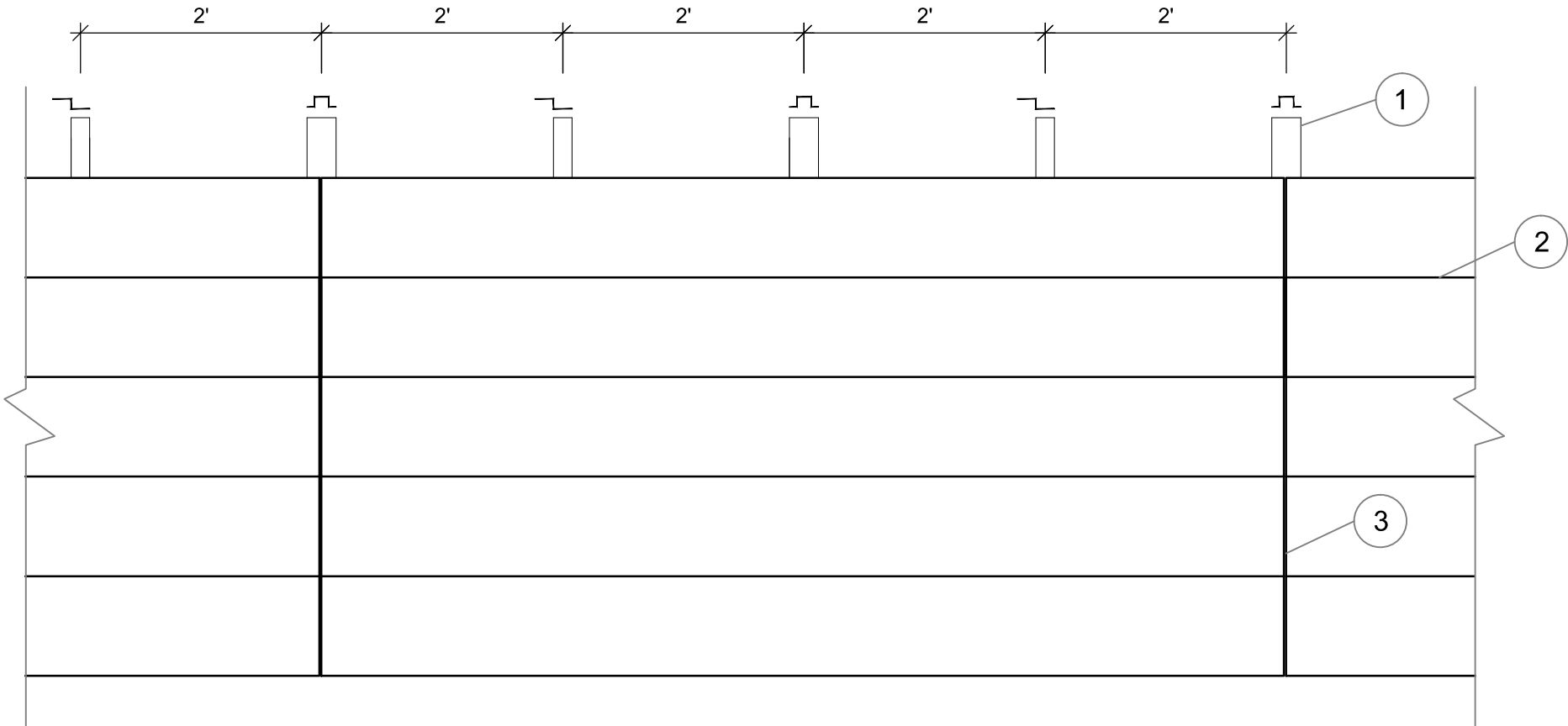
GIRT ORIENTATION: VERTICAL

WINDOW JAMB DETAIL

NOT TO SCALE



SUBSTRATE: VARIES	INSULATION: BY OTHERS (ALL)	RAILS NOT TO SCALE	20
CLADDING: ---	DATE: 09-13-2021		
	GIRT ORIENTATION: VERTICAL		



Legend

- 1 Aluminum or Steel sub-framing
- 2 Steni panel
- 3 3/8" Panel Joint

SUBSTRATE: VARIES

INSULATION: BY OTHERS (ALL)

CLADDING: ---

DATE: 09-13-2021

GIRT ORIENTATION: VERTICAL

GIRT SPACING LAYOUT

NOT TO SCALE